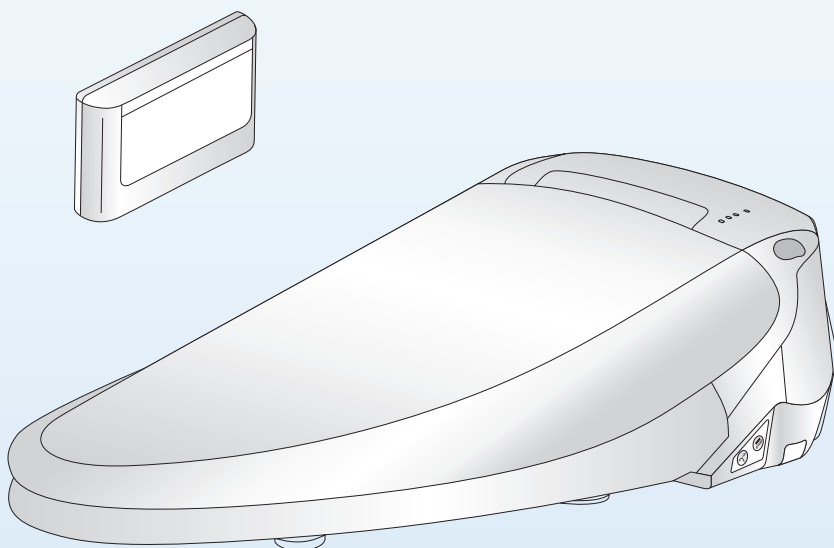




## Computerized Bidet Shower Seat

OWNER'S MANUAL

BS7212 BS7222



Thank you for purchasing **E'LOO** Computerized Bidet Shower Seat.  
Please read carefully before product installation or use.



# CONTENTS

## Contents

---

Important Safeguards ..... 01-02

Specifcation ..... 03

Configuration .....04

Operation Buttons.....05

Installation .....06-08

Operation .....09-13

Maintenance .....14-15

Troubleshooting ..... 16

## Important Safeguards

01



For safety reasons, please read this entire manual before use and keep in the place where you can reach easily

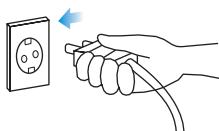
1



### Prevent Mild Burn :

For the disable or the people with less sensitivity on heat, please adjust the temperature of the heated seat to lower level in order to prevent mild burn.

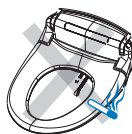
2



### Attention to electric safety specification in P3 before use :

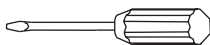
Please read electric safety instruction before use to ensure the product is supplied in suitable voltage. Keep the bathroom in good air circulation.

3



### Do not put inflammable objects on product such as cigarettes :

4



### Please do not disassemble, or modify the product :

Please do not disassemble, or modify the product. Only an authorized service representative should perform repairs otherwise it could cause danger.

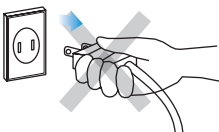
5



### Please do not spray water directly :

Please use cautiously not to spray water directly on the product or power cord. This could result in electric shock or fire.

6



### Please unplug the power when the product will not be used for a long time.

7



Do not use harsh brushes or abrasive detergents to clean the product. Use only mild soap and a soft cloth for cleaning.



Please obey the following instructions for safety and prevent product being damaged

**Do not press heavily on bidet lid or body housing :**

Do not step or press heavily on bidet lid or body housing in case product damaged and get injury.



1

**Do not lean on bidet lid :**

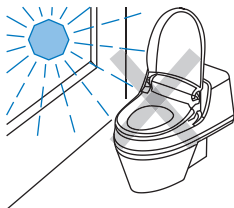
Do not lean on bidet lid in case bidet lid cracked and get broken.



2

**Keep out the sunshine directly :**

Keep out the sunshine directly or it could cause color variation unstable temperature of bidet seat or poor reception of remote control.



3

**Do not drop remote control to floor or toilet :**

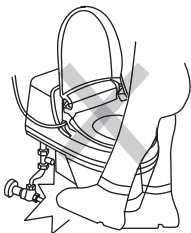
It could cause remote control breakdown.



4



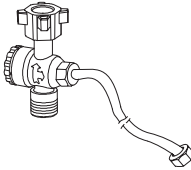
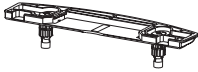
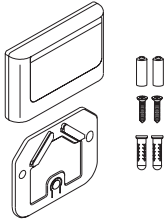

**Do not bend nor press bidet hose :**

It could influence water supply and unstable flush.



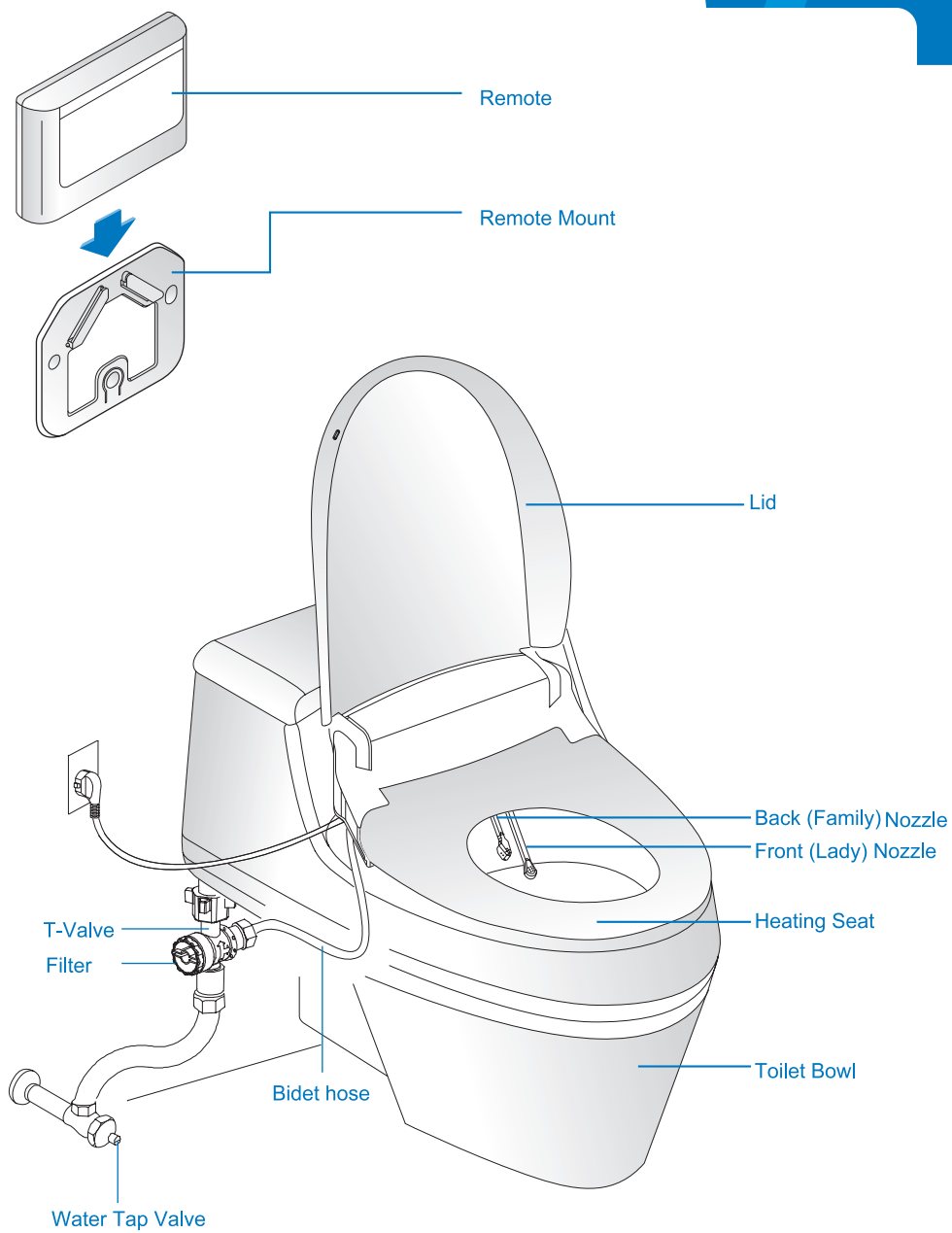
5

## Parts List

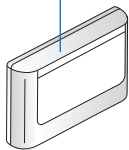
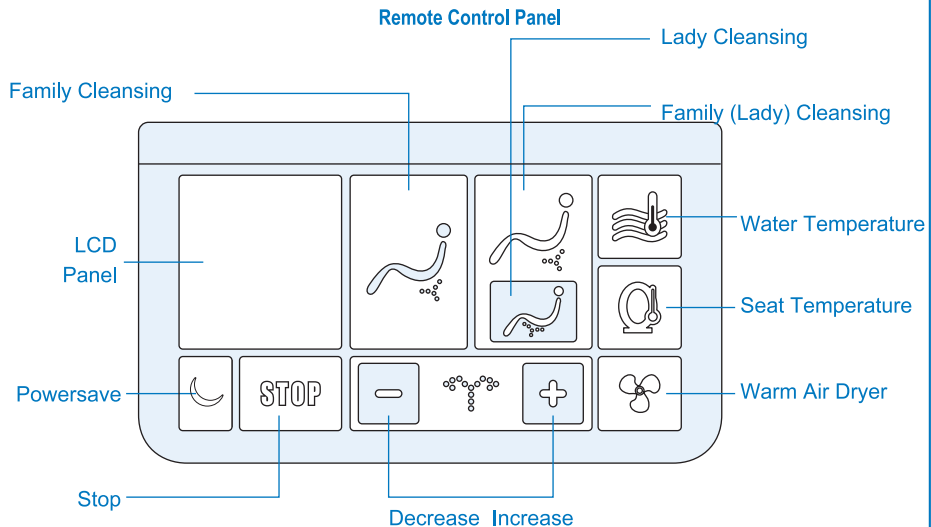
Items	Owner's Manual	Quick install guide	T-Valve with Bidet Hose
Diagram			
Items	Mounting Plate with Hardware Kits	Remote Control & Mounting Kits	Universal Wrench
Diagram			

## Specification

Model No.	BS7212	BS7222
Rated Power	AC 220-240V 50Hz	
Tap Water Pressure	0.5-7.5 kgf/cm <sup>2</sup> (7.1~106.7psi)	
Daily Rated Power Consumption	1.5kWh	
Seat Temperature	Off Room temperature Low 36℃ Med 38℃ High 40℃	
Seat & Lid	Soft closing	
Maximum spray Volume	Lady cleaning 0.72 liter/min	Family cleaning 0.72 liter/min
Water Temperature	Off Water Temperature Low 36 °C Med 38 °C High 40 °C	
Dryer Temperature	3 levels	
Electrical Safety Protection	15 mA - GFCI	
Power Cord Length	1.2 M	
Product Dimensions	W383 mm • L483mm• H153mm	W383 mm • L511mm• H153mm



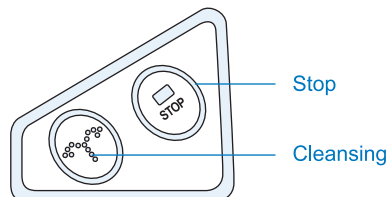
## BS7212 / BS7222



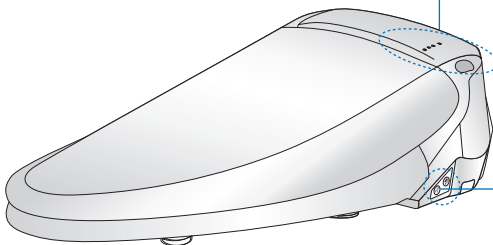
### 【Display Panel】

- power
- power save
- seat heat
- seat sensor

### 【Auxiliary Controls】



Backup for remote



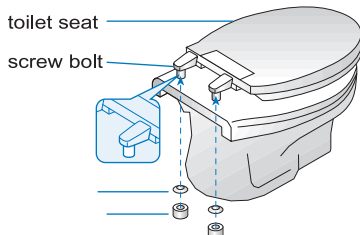


## Installation

Please read these instructions carefully before installation.  
Failure to do so could result in flooding, leaking, or damage to the product.

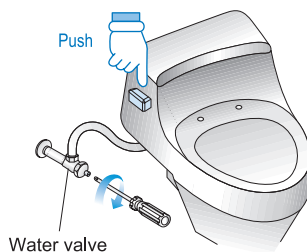
### Before Installation

#### 1. Remove the existing toilet seat



Steps may vary by type of seat.

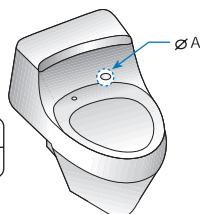
#### 2. Turn water valve off completely and flush to empty the toilet tank



### Install mounting plate

Check the size of the mounting holes

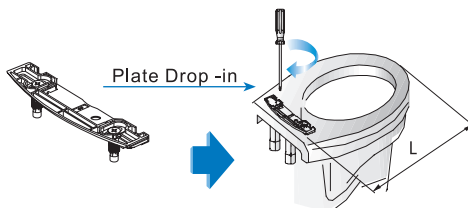
Diameter(mm)
Mounting hole 10mm to 17mm



	Dimension	
Mounting hole	<15	≥15
Circle B	0	2

Mounting hole ≥ 15

As the mounting hole is ≥15mm, just drop - in the plate into the mounting holes and tighten with a screw driver.

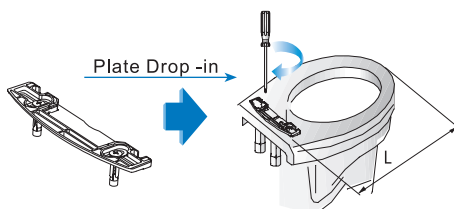
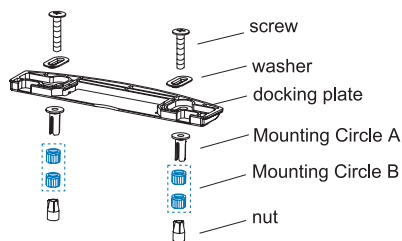


Note : Adjust mounting plate so length(L) between the front of the toilet bowl and the center rear of the mounting plate is as follows :

Round Toilet: L=465mm  
Elongated Toilet: L=495mm

Mounting hole < 15

- As the mounting hole is <15mm, take off mounting circle B and assemble the mounting kit as the step below.
- Warning! Bolts/washers must be assembled as below. Otherwise the plate will not be fixed.



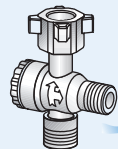
Note : Adjust mounting plate so length(L) between the front of the toilet bowl and the center rear of the mounting plate is as follows :

Round Toilet: L=465mm  
Elongated Toilet: L=495mm

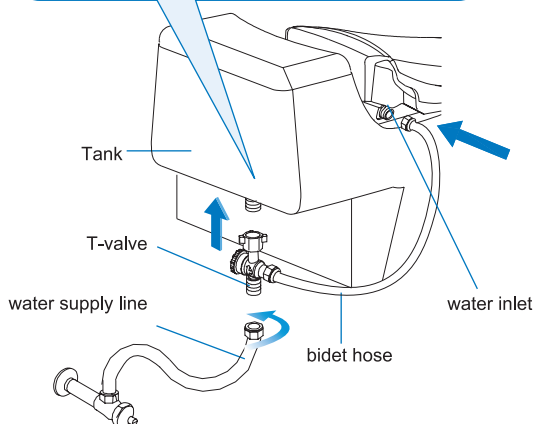
## Connect T-valve and Hoses

### 1. Connect T-valve and Hoses

The T-valve is properly installed as the build-in filter keeps out the impurities from the tap water

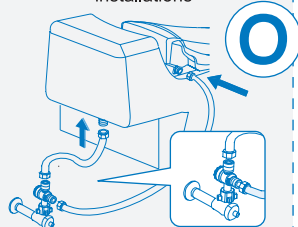


Warnig! - T-vale must be installed properly with all connections before continuing. Failure to do so could conduct water leakqge

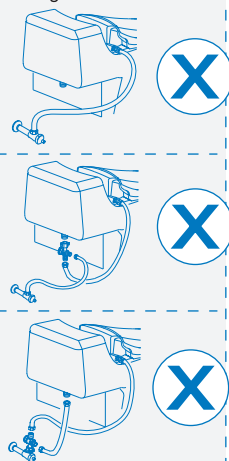


Warning-The connectors are made of plastic, use wrench gently to tighten all connections

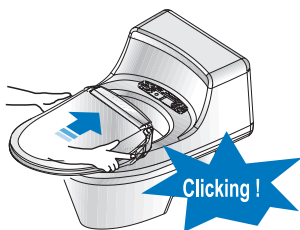
#### Options of standard installations



#### Wrong connections



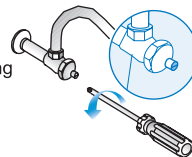
### 2. Attach the computerized bidet



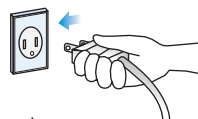
slide the bidet on to the mounting plate. You will hear a " Clicking " indicating the seat has been properly attached

### 3. Turn on water and connect power

(1)Turn on the water valve slowly. Ensure the connections are not leaking before continuing



(2)Make sure to keep hands dry. Insert the power plug into a outlet

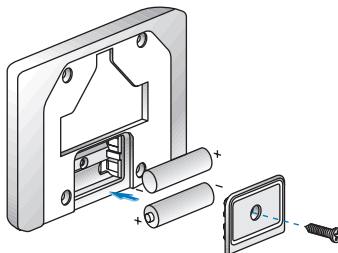


(3)Sit on the bidet seat and press the cleaning button. Meanwhile, remain seated as it will take about 60 seconds to fill up the water tank for the nozzles to work for the first time.

## Remote Control

## 1. Battery Installation

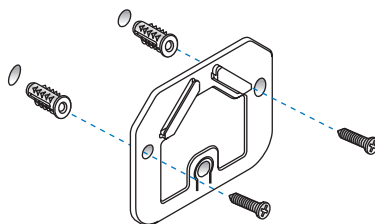
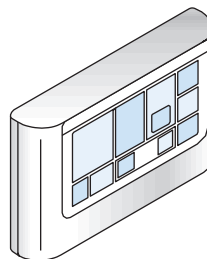
- Load two AAA batteries into Remote Control as shown in below figure.
- Tighten battery cover with screw



## 2. Remote Control Installation

- Identify a location for the Remote Control that is visible and reachable from the toilet and that does not obstruct the IR signal coming from the top of the remote control.
- Depending on your wall type, you can install the screws directly or use the anchor mounts as shown in below figure.

If you prefer not to drill holes into your wall, you may use double sided foam tape to adhere bracket to the wall. In this case, make sure to choose a tape with an adhesive that will not damage wall upon removal of the remote control.



## Ready To Use

- Re-check whether all functions of the remote and display if stable or not before using. After finished all installments, then sit on the seat, press the wash button and adjust the water pressure to the highest volume to speed water flows into the tank. (It will take about 1 min)
- When the water level tank is full, the wash wand will extend and begin to spray. Press STOP to cancel the wash function, Your product is now ready for use.

## Operation

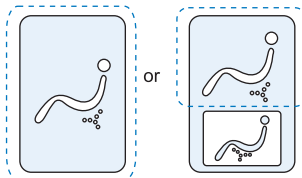
For safety reasons, the product is designed to function ONLY when seated.

### Remote Control

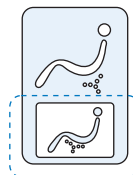
#### 1. Sit on the toilet seat

#### 2. Select water wash function

- for back (Family) clean please press



- or Front (lady) clean, please press button .....





#### ■ Water flow / pressure adjustment

Press the "+" or "-" adjust water pressure and repeat until desired level is reached. There are five level of pressure. Each wider bar on the LCD display represents one levels increase.

#### ■ Two Washing Mode

Normal ↔ Pulsating washing mode

- To change the pulsating mode, press the  or  button on remote control for over 3 seconds.

- To deactivate and return to normal washing mode, repeat the above step.

	LCD PANEL	Cleaning Mode
Normal washing mode	Light-flashes after another	Normal water
Pulsating washing mode	The lights glitter simultaneously	Pulsating water

Note:

1. Water pressure level must be at 3 or above for pulsating water mode
2. It is normal that the pulsating water mode interchanges the water pressure from strong to weak.



#### 3. Pres STOP button to discontinue the water flow

#### 4. Select Dryer function

Press Air dryer  button to start the dryer , press  button to stop the dryer.

## Remote Control



## 5. Adjust Seat Temperature

Press seat temp  to adjust the seat temperature. Repeat pressing  until desired level is achieved. There are four temperature levels : low>midium>high>off. No LCD graphic display indicates seat heating is off. Each wider bar on the LCD display represents one leve increase.

The function displays on the LCD .....



## 6. Adjust Water Temperature

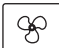

Press water temp  to adjust the water temperature. Repeat pressing  until desired level is achieved. There are four temperature levels : low>midium>high>off. No LCD graphic display indicates water heating is off. Each wider bar on the LCD display represents one leve increase.

The function represents on the LCD .....



Note:The setting of water and seat temperature will take a few minutes to heat up. Whenever on wishes to have the warm water and seat be sure NOT to switch the temperature OFF.

## 7. Adjust Air Dryert Temperature

Press air dryer  button to adjust air dryer temperature, Repeat pressing  button until desired level is achieved, There are four temperature levels : low>midium>high>off. No LCD graphic display indicates air dryer temperature is off. Each wider bar on the LCD display represents one level| increase.

The function represents on the LCD .....








## Remote Control

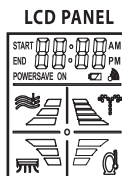
### 8. Power Save Mode

The product includes a power saving feature to reduce electrical consumption when not in use. Once set, the Powersave function turns the product on and off each day according to your time settings.

#### Setting Powersave Start and End Times

- Press the Powersave button on the remote control for 5 seconds. "  " on the remote and the Powersave LED on the product will flash.
- Set the Powersave start time using  WATER FLOW for hours and  WATER FLOW for minutes. When the desired start time is displayed, press the Powersave button.
- "POWERSAVE END" on the remote and the Powersave LED on the product will flash. Set the Powersave end time using  WATER FLOW for hours and  WATER FLOW for minutes. When the desired end time is displayed, press the Powersave button.

The remote LCD will show POWERSAVE and the Powersave LED on the seat will be green. Powersave is now armed and the unit will go into power save mode at the specified start time.



#### Enabling and Disabling Powersave

- Press POWERSAVE to toggle between Powersave enabled and Powersave disabled.
- To change Powersave Start and End times, hold POWERSAVE for 5 seconds and repeat procedure above.

#### When Powersave is Operating

- When the product is in Powersave mode, the associated LED on the seat will glow Orange
- Sitting on the product while it is in Powersave mode will return the unit to normal operation.
- The product will not re-enter Powersave mode until the next day's scheduled start time.




### 9. Remote control beeping/silent modes

To change modes: press and hold the WATER TEMP button  for more than 5 seconds.

ON-OFF

Note: Return to beeping mode, repeat the above step

### 10. Setting Clock

- Press and hold the STOP button  on the Remote Control for over 5 seconds until the Clock flashes. Use the  button and  to set the Hour and Minutes.
- To submit clock setting, press the STOP button or idle over 10 seconds the setting is automatically finished.

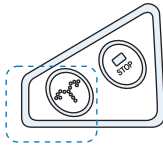
Please follow the instruction below when the remote is not working

### Auxiliary

1. Sit on the bidet seat.

2. Activate water wash by Aux. button

Press Aux Wash Button

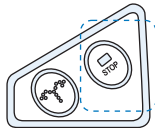


to activate water flow

The Aux. wash button is most suitable for back cleaning, her users need to sit more backwards for suitable water cleaning.

3. Stop cleaning

Press stop button



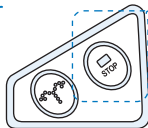
4. Air Dryer

Sit on the bidet seat, press stop button, air dryer will activate with medium temperature.



5. Stop the Air Dryer

Press stop button



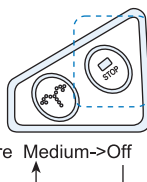
Remark:

1. While the cleaning is in action, some water would flow from the sides of nozzle. This is a normal operation.
2. When the water pressure is lower than  $1.3 \text{ kg/cm}^2$ , the wash water may be still low even high water level is selected. It happens if the supply water pressure is lower due to water tank is draining water or other tap is in use.

## Auxiliary

### 6. To adjust Seat Temperature

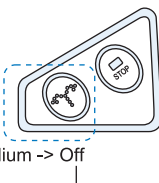
Press and hold the AUX STOP button  
button again to change seat temperature



for 5 seconds. Press AUX STOP

### 7. Adjust water temperature

Press and hold the AUX WASH button  
again to change water temperature medium -> Off



for 5 seconds. Press AUX WASH button

The setting of water and seat temperature will take a few minutes to heat up. Whenever to have the water and seat temperature, advise NOT to switch the temperature OFF.





Please read the following instruction cleaning the bidet with caution before maintenance task starts.  
Always unplug the power cord before cleaning !

### I. Bidet seat cleaning

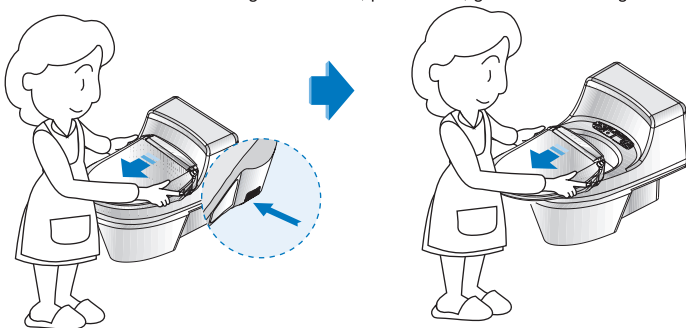
Use a soft and damp cloth to wipe the seat gently and clean again with a dry soft cloth.

### II. Clean the interspace between body housing and toilet

#### 1. Remove the product

I. Push the button located on the back right side of seat and gently pull forward.

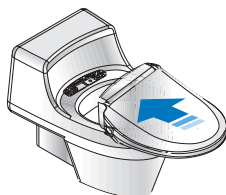
II. Please take care do not damage bidet hose, power cord, ground wire during the removal.



#### 2. Clean ceramic surface and back of body housing

#### 3. Resume to attach the bidet

Slide the product onto the mounting plate. When you hear a "click" it indicates the seat has been properly attached.



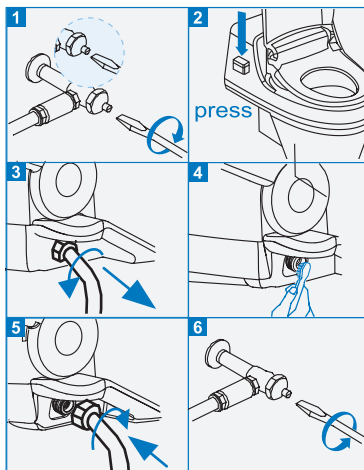
### III. Nozzles cleaning

It is recommended that you clean retractable nozzles monthly or as necessary. To clean the nozzles, pull them out gently and use soft, damp brush or cloth to wipe down. DO NOT use soap or detergents to clean the nozzles.



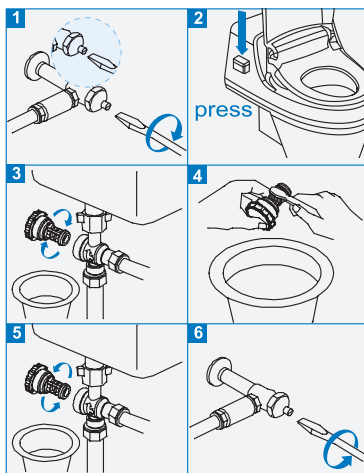
## IV .Bidet -Hose Filter Cleaning

- 1) Turn water valve off completely.
- 2) Flush the toilet to empty the water tank. (Failure to do so could result in leaking or flooding!)
- 3) Disconnect the Bidet Hose from the seat
- 4) Gently brush and clean the filter with water to remove build-up.
- 5) Reconnect the Bidet Hose to the T-Valve.
- 6) Turn the water valve back on.



## V .T-Valve Filter Cleaning

- 1) Turn water valve off completely
  - ◆ Use the screwdriver to turn water valve off .
- 2) Flush the toilet to empty the water tank
  - ◆ Failure to do so could result in leaking or flooding ! )
- 3) Unscrew the filter from the T-Valve
  - ◆ Place a container under the filter first
  - ◆ Dismantle the filter softly.
  - ◆ Don't move the T-Valve, or it will cause water to leak.
- 4)Clean
  - ◆ Gently brush and clean the filter with water to remove build-up.
- 5) Reconnect the filter to the valve
- 6) Turn the water valve back on.



	Issue	Possible	Solution
1	Low water flow or pressure	1.Clogged filter 2.Twisted hose	1.Clean water filter 2.Straighten the hose
2	Nozzles do not function properly	1.Nozzles are dirty 2.Clogged filter 3.Water pressure is too low	1.Clean the nozzles 2.Clean the filters 3.Adjust water pressure
3	Nozzles fail to retract	1.Nozzles are dirty	1.Clean the nozzles
4	Washing feature does not work or fails to spray	1.User not properly seated 2.User weights less than 30 lbs	1.Adjust your sitting position 2.Have a adult help by pressing down on the seat
5	Product shuts off during use	1.Washing time exceeded 5 minutes 2.Power failure	1.Repeat cleaning function 2.Check power and /or unplug the cord to reset
6	Seat not heated	1.Seat temperature set to off	1.Reset heated seat temperature
7	Water not heated	1.Water temperature set to off 2.To wash continuously long time	1.Reset heated water temperature 2.Please allow approximate 1 min to heat up the water.
8	Remote control failed	1.Remote control can't receive 2.Battery is low power 3.Location of remote control is not suitable	1.Something or somebody disturb the receiving from the remote control 2.Replace the battery 3.Change or move the location of the remote control
9	Dryer not working	1.Dryer only operates when activated	1.Sit on product to operate dryer
10	Other	1.Pleaes contact the agent	1.Agent will provide service support

