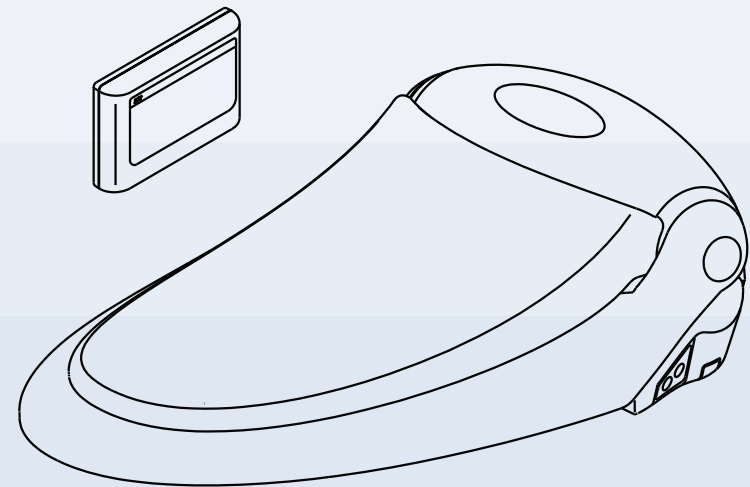




Computerized Bidet Shower Seat

OWNER'S MANUAL

BS5212 BS5222



Thank you for purchasing **E'LOO** Computerized Bidet Shower Seat.
Please read carefully before product installation or use.

CONTENTS

Contents

Important Safeguards.....01~02

Specifcation.....03

Configuration.....04

Operation Buttons.....05

Installation.....06~08

Operation.....09~14


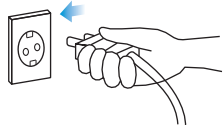

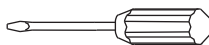

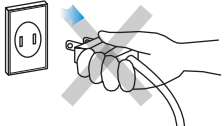
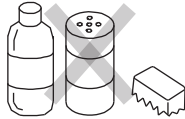
Maintenance.....15

Troubeshooting.....16

Important Safeguards

01



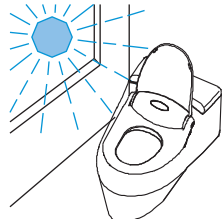


! For safety reasons, please read this entire manual before use and keep in the place where you can reach easily

1		Prevent Mild Burn: For the disable or the people with less sensitivity on heat, please adjust the temperature of the heated seat to lower level in order to prevent mild burn.
2		Attention to electric safety specification in P3 before use: Please read electric safety instruction before use to ensure the product is supplied in suitable voltage. Keep the bathroom in good air circulation.
3		Do not put inflammable objects on product such as cigarettes.
4		Please do not disassemble, or modify the product: Please do not disassemble, or modify the product. Only an authorized service representative should perform repairs otherwise it could cause danger.
5		Please do not spray water directly: Please use cautiously not to spray water directly on the product or power cord. This could result in electric shock or fire.
6		Please unplug the power when the product will not be used for a long time.
7		Do not use harsh brushes or abrasive detergents to clean the product. Use only mild soap and a soft cloth for cleaning.

Important Safeguards

02

! For safety reasons, please read this entire manual before use. Obey the following instructions for safety and prevent product being damaged.

Do not press heavily on bidet lid or body housing: Do not step or press heavily on bidet lid or body housing in case product damaged and get injury.		1
Do not lean on bidet lid: Do not lean on bidet lid in case bidet lid cracked and get broken.		2
Keep out the sunshine directly: Keep out the sunshine directly or it could cause color variation unstable temperature of bidet seat or poor reception of remote control.		3
Do not drop remote control to floor or toilet: It could cause remote control breakdown.		4
Do not bend nor press bidet hose: It could influence water supply and unstable flush.		5

Specification

03

Parts List

Items	Owner's Manual	Quick Install Guide	T-Valve with Bidet Hose
Diagram			
Items	Mounting Plate with Hardware Kits	Remote Control & Mounting Kits	Universal Wrench
Diagram			

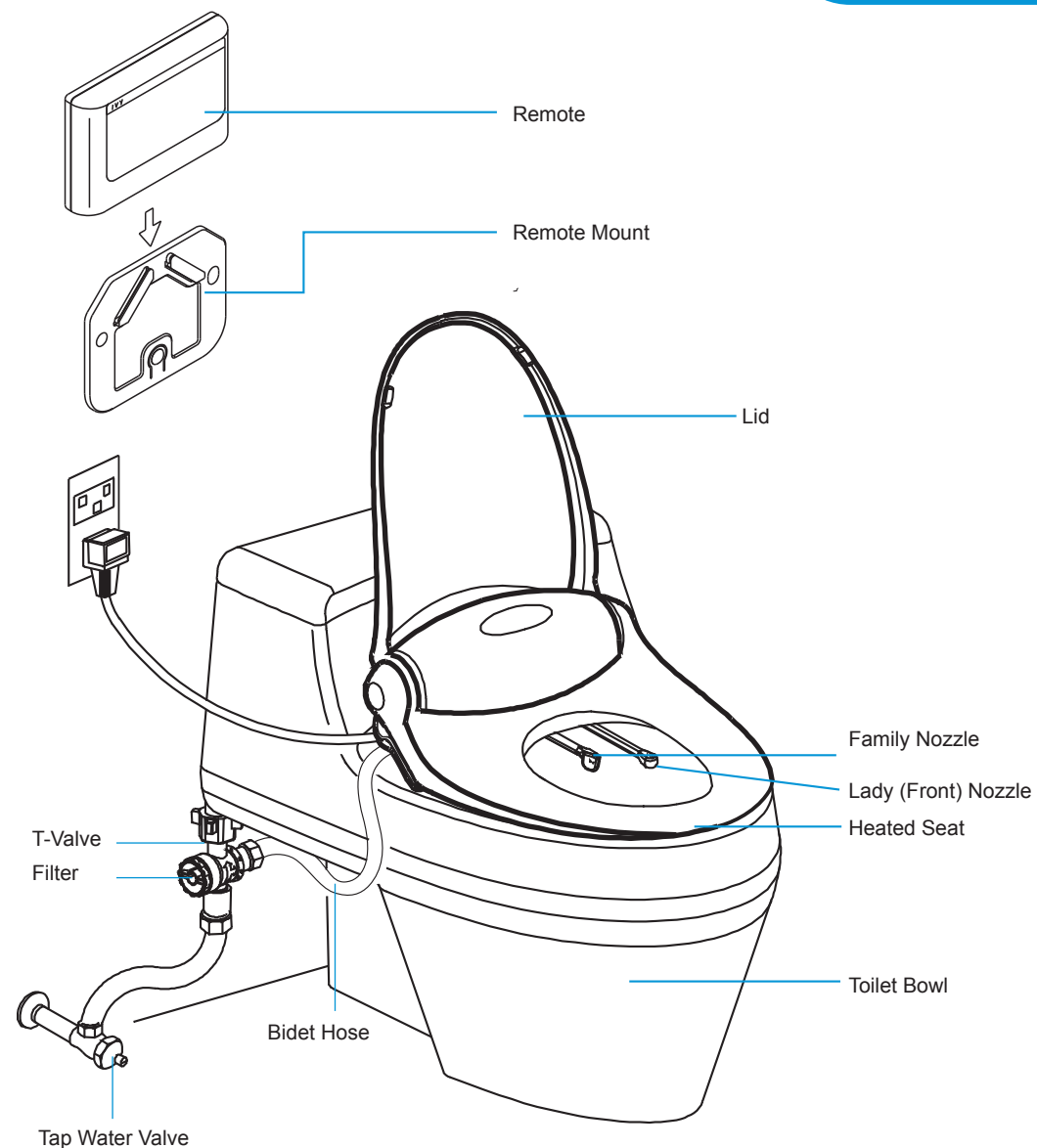
Specification

Model No.	BS5212	BS5222
Rated Power	AC110V/220V 50Hz/60Hz (Please Check Note)	
Tap Water Pressure	0.5-7.5 kgf/cm ² (7.1~106.7psi)	
Maximum Power Consumption	900 w	
Seat Temperature	Off Room Temperature Low 36°C Med 38°C High 40°C	
Seat & Lid	Soft closing	
Maximum Spray Volume	Lady cleaning 0.72 liter/min Family cleaning 0.72 liter/min	
Water Temperature	Off Water Temperature Low 36°C Med 38°C High 40°C	
Dryer Temperature	3 levels	
Electrical Safety Protection	15 mA – GFCI	
Power Cord Length	1.2M	
Product Dimensions	W383mm*L483mm*H160mm	W383mm*L511mm*H160mm

Note: AC100~120V 60Hz rated power for BS5212-1, BS5222-1
AC220~240V 50Hz rated power for BS5212-2, BS5222-2

04

Configuration

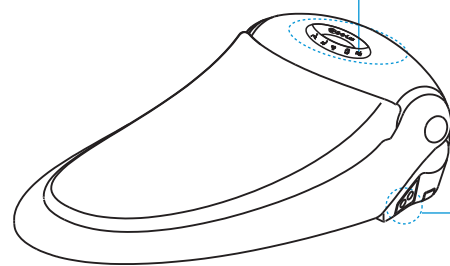
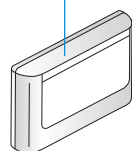
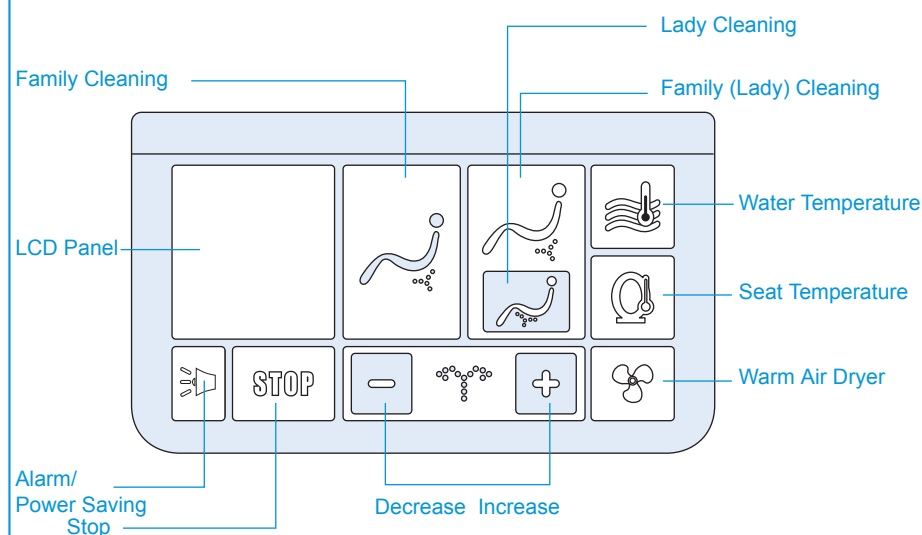


Operation Buttons

05

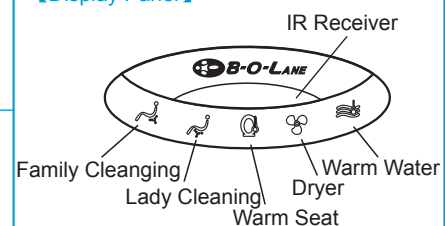
BS5212 / BS5222

Remote Control Panel

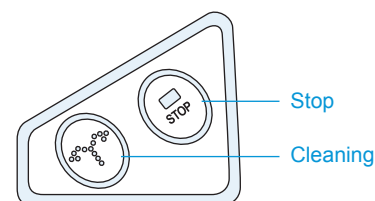


Backup for remote

【Display Panel】



【Auxiliary controls】



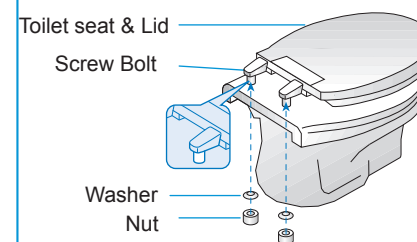
Installation

06

Do not plug-in the product before completion of installation. Please read these instructions carefully before installation. Failure to do so could result in flooding, leaking, or damage to the product.

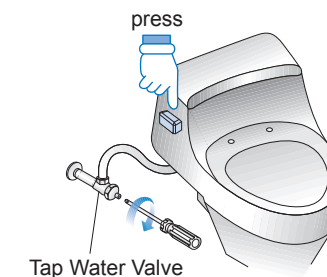
Before Installation

1. Remove the existing toilet seat



Steps may vary by type of seat.

2. Turn water valve off completely and flush to empty the toilet tank



Install Mounting Plate

Check the dimension of the mounting holes.

A. Check the diameter for toilet compatibility.



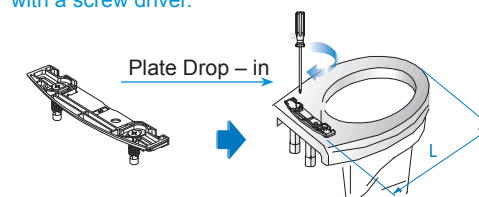
Diameter (mm)	
Mounting hole	Ø10 to Ø17(mm)

B. Mounting Circle B is required for bigger diameter.

	Dimension	
Mounting Hole	< Ø15 mm	≥ Ø15 mm
Circle B	0	2

Mounting Hole ≥ Ø15mm

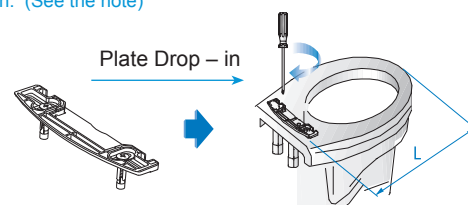
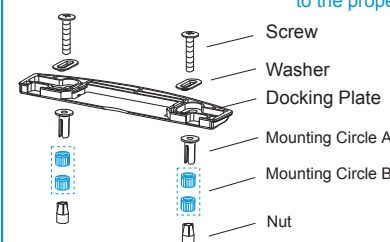
As the mounting hole is ≥ Ø15mm, just drop – in the plate into the mounting holes and tighten with a screw driver.



Note : Adjust mounting plate so length(L) between the front of the toilet bowl and the center rear of the mounting plate is as follows :
Round Toilet : L=465mm
Elongated Toilet : L=495mm

Mounting Hole < Ø15mm

As the mounting hole is < Ø15mm, take off mounting circle B and re-assemble the mounting kits as the Diagram below. Drop-in the re-assembled plate into the mounting holes and tighten with a screw driver after adjusting the mounting plate to the proper location. (See the note)

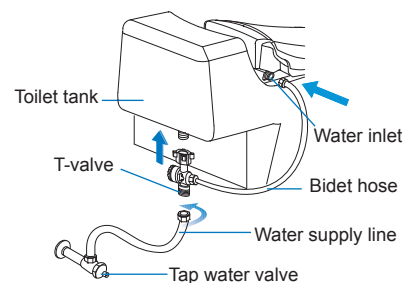
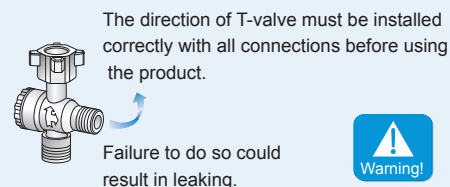


Note : Adjust mounting plate so length(L) between the front of the toilet bowl and the center rear of the mounting plate is as follows :
Round Toilet : L=465mm
Elongated Toilet : L=495mm

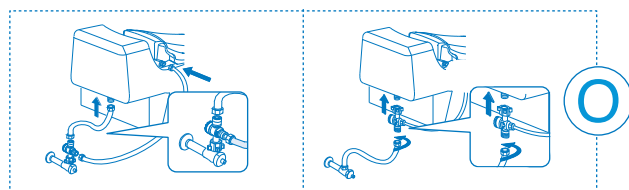
Warning! Bolts/ washers must be assembled correctly as instructed. Otherwise the plate will not be fixed.

Connect T-valve and Hoses

1. The T-valve is required to install properly as the build-in filter keeps out the impurities from the tap water.



Standard Connections



Wrong Connections

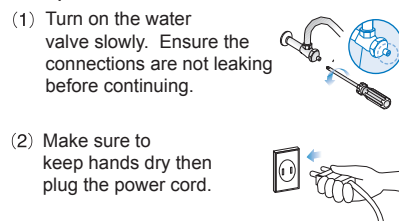


2. Attach the product



Slide the product onto the mounting plate. You will hear a "Clicking" indicating the seat has been properly attached.

3. Turn on tap water valve and plug the power cord

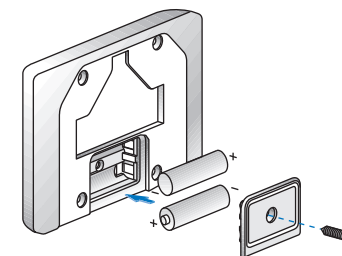


Warning! Do not plug-in the product before completion of installation thoroughly. Failure to do so could result in product breakdown.

Remote control

1. Battery Installation

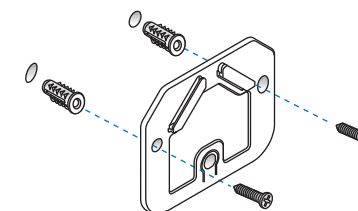
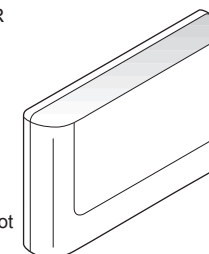
- Load two AAA batteries into Remote Control as shown in below figure.
- Tighten battery cover with screw



2. Remote Control Installation

- Identify a location for the Remote Control that is visible and reachable from the product and that does not obstruct the IR signal coming from the top of the remote control.
- Depending on your wall type, you can install the screws directly or use the anchor mounts as shown in below figure.

If you prefer not to drill holes into your wall, you may use double sided foam tape to adhere bracket to the wall. In this case, make sure to choose a tape with an adhesive that will not damage wall upon removal of the remote control.



Ready To Use

- Sit on the bidet seat and press the cleaning button. Meanwhile, remain seated as it will take about **1 min.** to fill up the water tank. When the water tank is full, the nozzle will extend and begin to spray. Press STOP button to cancel the cleaning function.
- Your product is now ready to use.

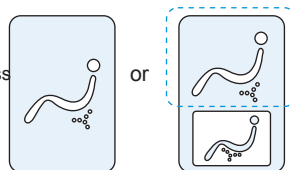
For safety reasons, the product is designed to function ONLY when seated.

Remote Control

1. Sit on the toilet seat

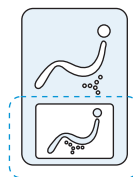
2. Select cleaning function

- for Family (Rear) cleaning, please press



or

- or Lady (Front) clean, please press button





■ Water flow / pressure adjustment

Press the "+" or "-" adjust water pressure and repeat until desired level is reached. There are five level of pressure. Each wider bar on the LCD display represents one level increase.

■ Two Washing Mode

Pulsating ↔ SPA washing mode


- To change the pulsating mode, press the  or  button on remote control for over 3 seconds.
- To deactivate and return to normal washing mode, repeat the above step.

Washing Mode	LCD Panel
Pulsating	Light-flashes after another
SPA	Cleaning Bar glitters simultaneously

Note:

- Water pressure level must be at 3 or above for pulsating water mode
- It is normal that the pulsating water mode interchanges the water pressure from strong to weak.

3. Stop Cleaning

Press STOP  button to stop water cleahing.

4. Select Dryer function

Press Air dryer  button to start the dryer, press  button to stop the dryer.

Remote Control

5. Adjust Seat Temperature

Press seat temp  to adjust the seat temperature. Repeat pressing  until preferred

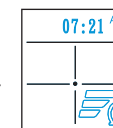
level is achieved. There are four temperature levels :

low>medium>high>off.

↑

No LCD graphic display

indicates seat heating is off. Each wider bar on the LCD display represents one level increase.



The function displays on the LCD

6. Adjust Water Temperature

Press water temp  to adjust the water temperature. Repeat pressing  until preferred

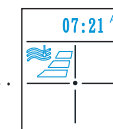
level is achieved. There are four temperature levels :

low>medium>high>off.

↑

No LCD graphic display



indicates water heating is off. Each wider bar on the LCD display represents one level increase.



The function represents on the LCD

Note: The setting of water and seat temperature will take a few minutes to heat up. Whenever on wishes to have the warm water and seat be sure NOT to switch the temperature OFF.

7. Adjust Air Dryer Temperature

Press air dryer  button to activate air dryer temperature. Repeat pressing  button until desired level is achieved. There are three temperature levels :

low>medium>high>off.

↑


No LCD graphic display indicates air dryer temperature is off. Each wider bar on the LCD display represents one level increase.



The function represents on the LCD



Remote Control

8. Remote control beeping/silent modes




To change modes: press and hold the WATER TEMP button  for more than 5 seconds.
ON-OFF

Note: Return to beeping mode, repeat the above step

9. Alarm Function



- Press and hold the  button for over 4 sec to activate the alarm for emergency call.
- Press the  button to stop the alarm. Or it will automatically shut off after 5 min.

10. Setting Clock

- Press and hold the STOP button  on the Remote Control for over 5 seconds until the Clock flashes. Use the  button and  to set the Hour and Minutes.
- To submit clock setting, press the STOP button or idle over 10 seconds the setting is automatically finished.

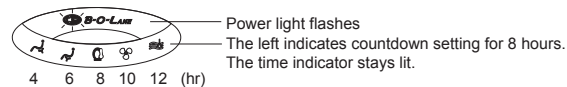
11. Power Saving - Timer Setting Function (To operate while Not Seated.)

- Power saving is available for 4-12 hours

- Press the  Button while not seated. This will activate the Power Saving Function. Repeat the  Button to add or reduce the countdown hours.

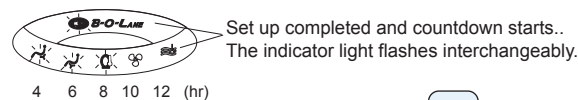
The indicator is lit as follows :


Illustration :



- The set up is completed when not pressing any buttons for 5 seconds.

Illustration :



Remarks : During timer setting, do not press and hold the  Button over 4 seconds as this will activate the Alarm system. Please refer to page 13 for Alarm function details if required

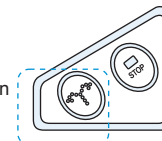
Please follow the instruction below when the remote is not working

Auxiliary

1. Sit on the bidet seat.

2. Activate water wash by Aux. button

Press Aux Wash Button

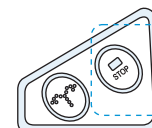


to activate water flow


The Aux. wash button is most suitable for back cleaning, her users need to sit more backwards for suitable water cleaning.

3. Stop cleaning

Press stop button

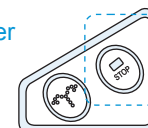


4. Air Dryer

Sit on the bidet seat, press stop button, air dryer will activate  with medium temperature.

5. Stop the Air Dryer

Press stop button



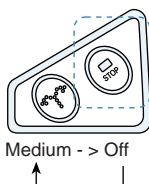
Remark:

- While the cleaning is in action, some water would flow from the sides of nozzle. This is a normal operation.
- When the water pressure is lower than 1.3kg/cm², the wash water may be still low even high water level is selected. It happens if the supply water pressure is lower due to water tank is draining water or other tap is in use.

Auxiliary

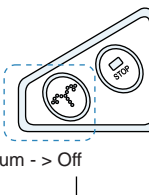
6. To adjust Seat Temperature

Press and hold the AUX STOP button for 5 seconds. Press AUX STOP button again to change seat temperature Medium -> Off



7. Adjust Water Temperature

Press and hold the AUX WASH button for 5 seconds. Press AUX WASH button again to change water temperature Medium -> Off



The setting of water and seat temperature will take a few minutes to heat up. Whenever to have the water and seat temperature, advise NOT to switch the temperature OFF.

! Please read the following instruction before maintenance task starts. Always unplug the power cord before cleaning!

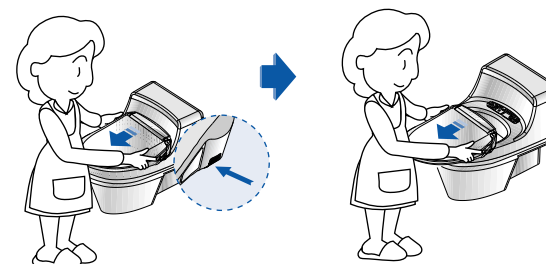
I. Bidet seat cleaning

Use a soft and damp cloth to wipe the seat gently and clean again with a dry soft cloth.

II. Clean the interspace between body housing and toilet

1. Remove the product

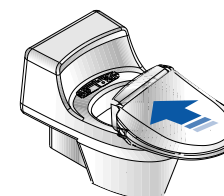
- I. Push the release button located on the back right side of seat and gently pull forward.
- II. Please take care do not damage or bend the bidet hose, power cord, during the removal.



2. Clean ceramic surface and back of body housing

3. Resume to attach the product

Slide the product onto the mounting plate. When you hear a "click" it indicates the seat has been properly attached.



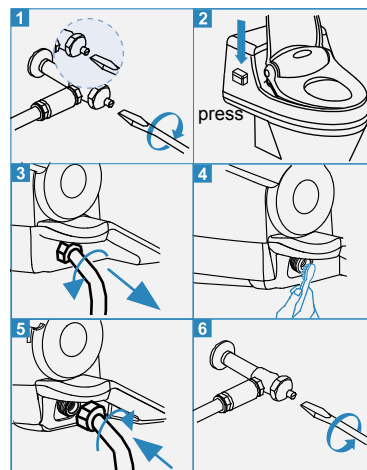
III. Nozzles cleaning

It is recommended that you clean retractable nozzles monthly or as necessary. To clean the nozzles, pull them out gently and use soft, damp brush or cloth to wipe down. DO NOT use soap or detergents to clean the nozzles.



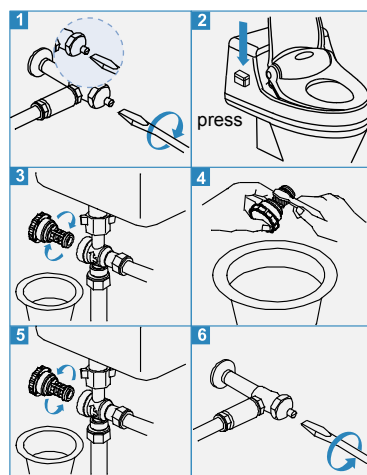
IV. Bidet-Hose Filter Cleaning

- 1) Turn water valve off completely.
- 2) Flush the toilet to empty the water tank. (Failure to do so could result in leaking or flooding!)
- 3) Disconnect the Bidet Hose from the seat.
- 4) Gently brush and clean the filter with water to remove build-up.
- 5) Reconnect the Bidet Hose to the T-Valve.
- 6) Turn the water valve back on.



V. T-Valve Filter Cleaning

- 1) Turn water valve off completely
Use the screwdriver to turn water valve off.
- 2) Flush the toilet to empty the water tank
Failure to do so could result in leaking or flooding!)
- 3) Unscrew the filter from the T-Valve
 - Place a container under the filter first, dismantle the filter softly.
 - Don't move the T-Valve, or it will cause water to leak.
- 4) Clean
Gently brush and clean the filter with water to remove build-up.
- 5) Reconnect the filter to the valve
- 6) Turn the water valve back on.



	Issue	Possible	Solution
1	Low spraying water	1. Clogged filter 2. Twisted hose	1. Clean water filter 2. Straighten the hose
2	Nozzles do not function properly	1. Nozzles are dirty 2. Clogged filter 3. Water pressure is too low	1. Clean the nozzles 2. Clean the filters 3. Adjust water pressure
3	Nozzles fail to retract	1. Nozzles are dirty	1. Clean the nozzles
4	Washing feature does not work or fails to spray	1. User not properly seated 2. User weights less than 10 kgs	1. Adjust your sitting position 2. Have a adult help by pressing down on the seat
5	Product shuts off during use	1. Washing time exceeded 5 minutes 2. Power failure	1. Repeat cleaning function 2. Check power and / or unplug the cord to reset
6	Seat not heated	1. Seat temperature set to off	1. Reset heated seat temperature
7	Water not heated	1. Water temperature set to off	1. Reset heated water temperature
8	Remote control failed	1. Remote control can't receive 2. Battery is low power 3. Location of remote control is not suitable	1. Something or somebody disturb the receiving from the remote control 2. Replace the battery 3. Change or move the location of the remote control
9	Dryer not working	1. Dryer only operates when activated	1. Sit on product to operate dryer
10	Other	1. Please contact the agent	1. Agent will provide service support

Customer Name:

Installation Company Name:

Model:

Installation Date:

Please make sure you fill in the installation date and installation company.

Authorized: B-O-LANE Comfortech Co., Ltd.

Manufactured in Taiwan:
B-O-Lane Comfortech Co., Ltd.
www.b-o-lane.com www.e-loo.com
sales@b-o-lane.com

Europe office:
New Line S.r.l.
www.newlineitalia.com
info@newlineitalia.com