

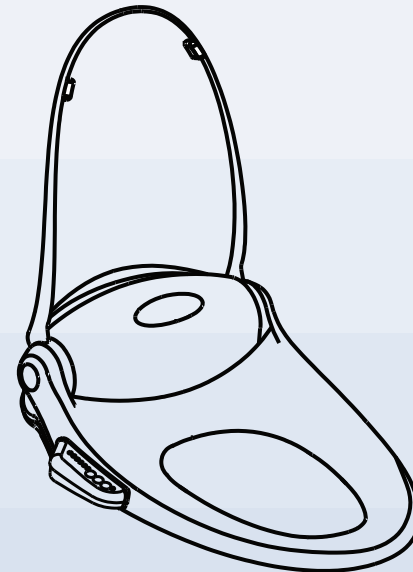


Computerized Bidet Shower Seat

OWNER'S MANUAL

BS3210 BS3220

BS3212 BS3222



Thank you for purchasing **E'LOO** Computerized Bidet Shower Seat.
Please read carefully before product installation or use.

CONTENTS

Contents

Important Safeguards.....01~02

Specifiction.....03

Configuration.....04

Installation.....05~06

Operation.....07~09

Maintenance.....10~11

Troubeshooting.....12

Important Safeguards

01

! For safety reasons, please read this entire manual before use and keep in the place where you can reach easily

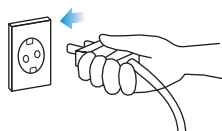
1



Prevent Mild Burn:

For the disable or the people with less sensitivity on heat, please adjust the temperature of the heated seat to lower level in order to prevent mild burn.

2



Attention to electric safety specification in P3 before use:

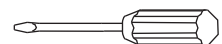
Please read electric safety instruction before use to ensure the product is supplied in suitable voltage. Keep the bathroom in good air circulation.

3



Do not put inflammable objects on product such as cigarettes.

4



Please do not disassemble, or modify the product:

Please do not disassemble, or modify the product. Only an authorized service representative should perform repairs otherwise it could cause danger.

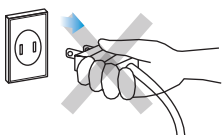
5



Please do not spray water directly:

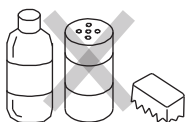
Please use cautiously not to spray water directly on the product or power cord. This could result in electric shock or fire.

6



Please unplug the power when the product will not be used for a long time.

7



Do not use harsh brushes or abrasive detergents to clean the product. Use only mild soap and a soft cloth for cleaning.

02

Important Safeguards

! For safety reasons, please read this entire manual before use. Obey the following instructions for safety and prevent product being damaged.

Do not press heavily on bidet lid or body housing:

Do not step or press heavily on bidet lid or body housing in case product damaged and get injury.



1

Do not lean on bidet lid:

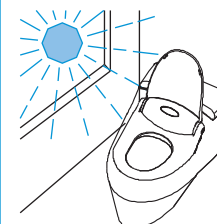
Do not lean on bidet lid in case bidet lid cracked and get broken.



2

Keep out the sunshine directly:

Keep out the sunshine directly or it could cause color variation unstable temperature of bidet seat or poor reception of remote control.



3

Do not drop remote control to floor or toilet:

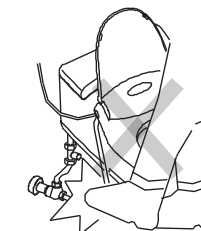
It could cause remote control breakdown.



4

Do not bend nor press bidet hose:

It could influence water supply and unstable flush.



5

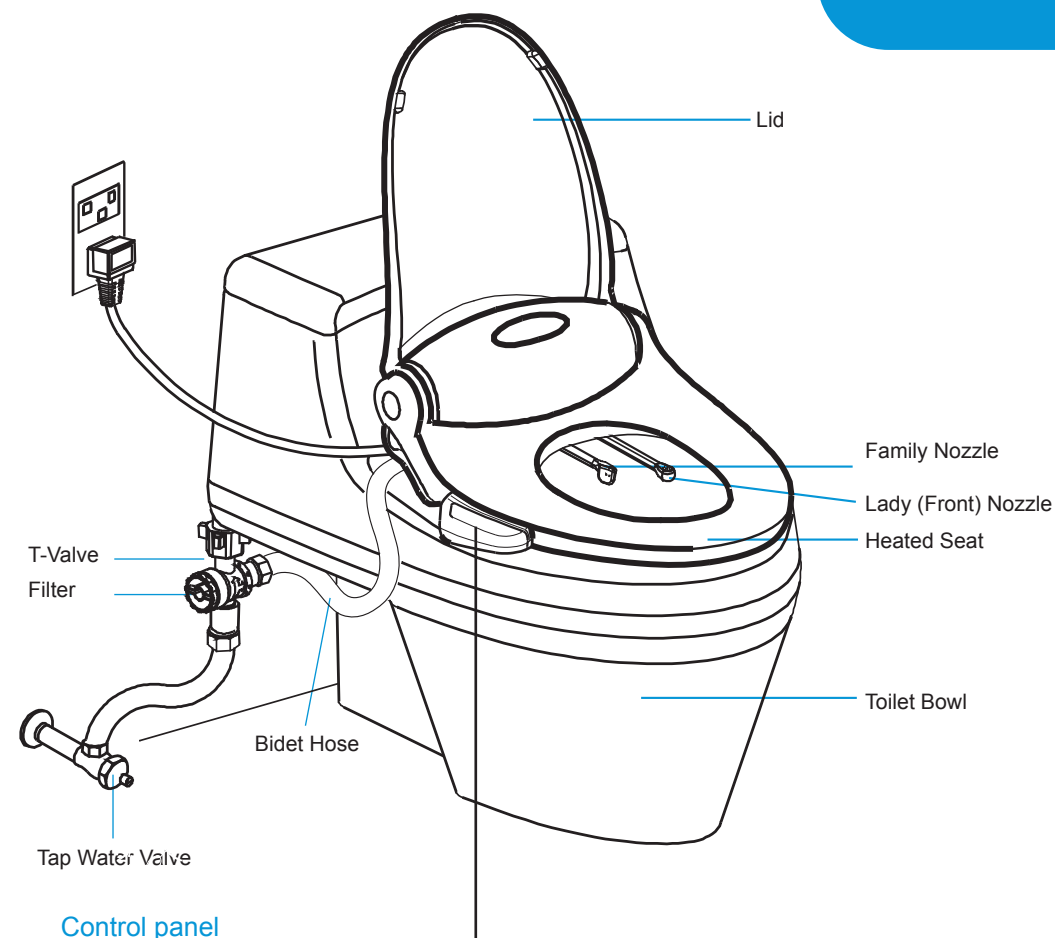
Parts List

Items	Owner's Manual	Quick Install Guide	T-Valve with Bidet Hose
Diagram			
Items	Mounting Plate with Hardware Kits	Universal Wrench	
Diagram			

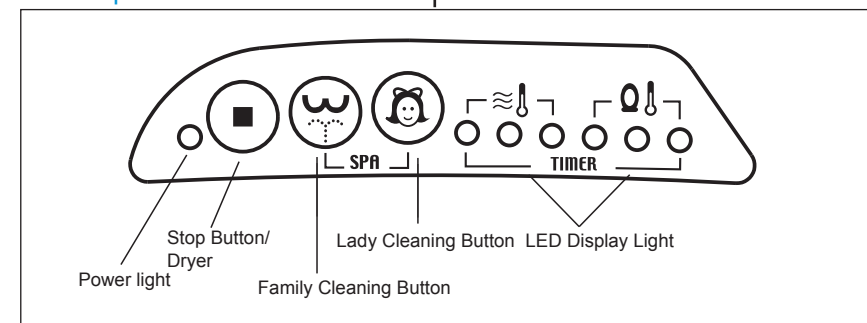
Specification

Model No.	BS3210	BS3212	BS3220	BS3222
Rated Power	AC110V/220V 50Hz/60Hz (Please Check Note)			
Tap Water Pressure	0.5-7.5 kgf/cm ² (7.1~106.7psi)			
Maximum Power Consumption	900 w			
Seat Temperature	Off Room Temperature Low 36°C Med 38°C High 40°C			
Seat & Lid	Soft closing			
Maximum Spray Volume	Lady cleaning 0.72 liter/min Family cleaning 0.72 liter/min			
Water Temperature	Off Water Temperature Low 36°C Med 38°C High 40°C			
Dryer Temperature	3 levels			
Electrical Safety Protection	15 mA – GFCI			
Power Cord Length	1.2M			
Product Dimensions	W410mm*L480mm*H160mm		W410mm-*L510mm*H160mm	

Note: AC100~120V 60Hz rated power for BS3210-1, BS3212-1, BS3220-1, BS3222-1
 AC220~240V 50Hz rated power for BS3210-2, BS3212-2, BS3220-2, BS3222-2



Control panel



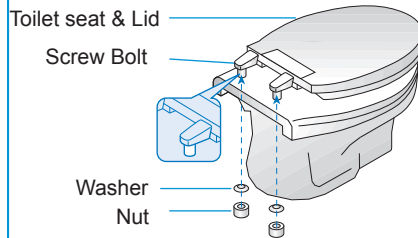
Installation

05

Do not plug-in the product before completion of installation. Please read these instructions carefully before installation. Failure to do so could result in flooding, leaking, or damage to the product.

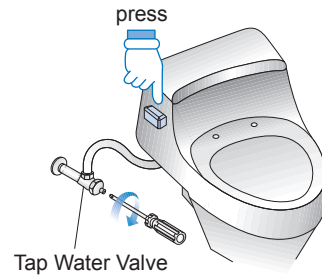
Before Installation

1. Remove the existing toilet seat



Steps may vary by type of seat.

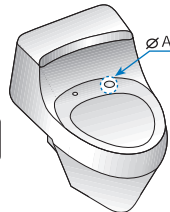
2. Turn water valve off completely and flush to empty the toilet tank



Install Mounting Plate

Check the dimension of the mounting holes.

A. Check the diameter for toilet compatibility.



Diameter (mm)
Mounting hole Ø10 to Ø17(mm)

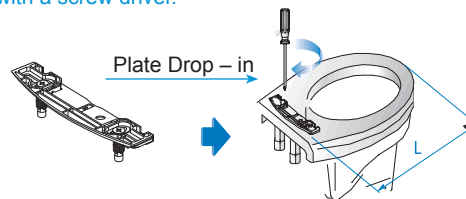


B. Mounting Circle B is required for bigger diameter.

	Dimension	
Mounting Hole	< Ø15 mm	≥ Ø15 mm
Circle B	0	2

Mounting Hole ≥ Ø15mm

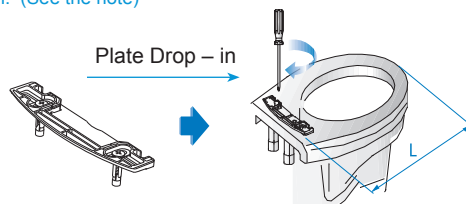
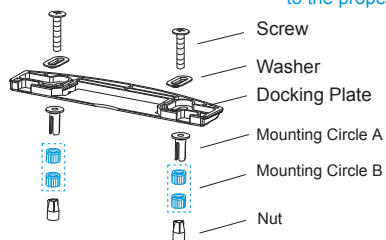
As the mounting hole is ≥ Ø15mm, just drop – in the plate into the mounting holes and tighten with a screw driver.



Note : Adjust mounting plate so length(L) between the front of the toilet bowl and the center rear of the mounting plate is as follows :
Round Toilet : L=465mm
Elongated Toilet : L=495mm

Mounting Hole < Ø15mm

- As the mounting hole is < Ø15mm, take off mounting circle B and re-assemble the mounting kits as the Diagram below. Drop-in the re-assembled plate into the mounting holes and tighten with a screw driver after adjusting the mounting plate to the proper location. (See the note)



Note : Adjust mounting plate so length(L) between the front of the toilet bowl and the center rear of the mounting plate is as follows :
Round Toilet : L=465mm
Elongated Toilet : L=495mm

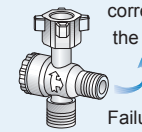
Warning! Bolts/ washers must be assembled correctly as instructed. Otherwise the plate will not be fixed.

Installation

06

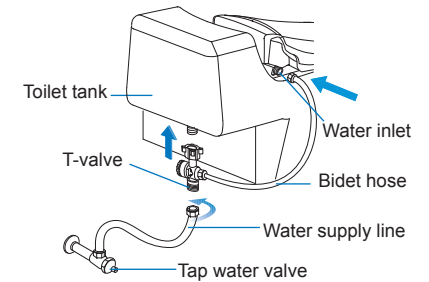
Connect T-valve and Hoses

1. The T-valve is required to install properly as the build-in filter keeps out the impurities from the tap water.

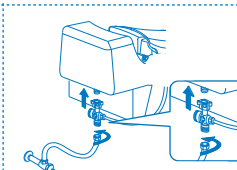
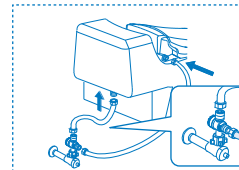


The direction of T-valve must be installed correctly with all connections before using the product.

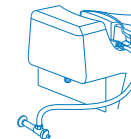
Failure to do so could result in leaking.



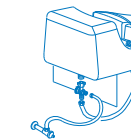
Standard Connections



Wrong Connections



T-valve must be included.



Bidet hose must be connected to the correct end of T-valve.



2. Attach the product



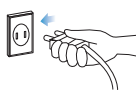
Slide the product onto the mounting plate. You will hear a "Clicking" indicating the seat has been properly attached.

3. Turn on tap water valve and plug the power cord

- Turn on the water valve slowly. Ensure the connections are not leaking before continuing.



- Make sure to keep hands dry then plug the power cord.





Warning! Do not plug-in the product before completion of installation thoroughly. Failure to do so could result in product breakdown.

For safety reasons, the product is designed to function ONLY when seated.

1. Sit on the toilet seat

2. Select cleaning function

- A. Select family Cleaning Button  or Lady Cleaning Button 
- B. Repeat the button you pressed for the first time to adjust water pressure to the desired level. Repeating same button allows you to adjust water pressure to the desired level. See Table One for water pressure levels indicated by the LED display lights.
- 6 adjustment levels are available to suit your need. Water pressure level is memorized as last use each time you start using the product.

3. Stop Cleaning



Press STOP  button to stop water cleaning.

4. Select Dryer function(only available with model BS3212,BS3222)

Press Stop Button  to activate the Dryer

Two Washing Mode

Pulsating ↔ SPA washing mode

- To change the pulsating mode, press the  or  button on remote control for over 3 seconds.
- To deactivate and return to normal washing mode, repeat the above step.

Washing Mode	LCD Panel
Pulsating	Light-flashes after another
SPA	Cleaning Bar glitters simultaneously


Note:

- Water pressure level must be at 3 or above for pulsating water mode
- It is normal that the pulsating water mode interchanges the water pressure from strong to weak.

Temperature setting for more comforts


- MODE 1 --- Set the temperature when Not Seated

To adjust water temperature

Press the  button to adjust water temperature to the desired level. Repeating button allows you to adjust from Low, Medium to High levels.

LOW > Medium > High > OFF
↑


To adjust seat temperature

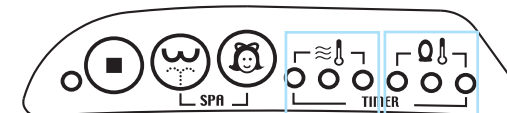
Press the  button to adjust seat temperature to the desired level. Repeating button allows you to adjust from Low, Medium to High levels.

LOW > Medium > High > OFF
↑


* 4 adjustment levels are available for water & seat temperature from Low / Medium / High to Off. The temperature is memorized as last use each time you start using the product.

- MODE 2 -- Set the temperature when Seated.

Press and hold the  button for more than 3 seconds, it will change to the setting mode.
(* The LED display lights will flash simultaneously.)




To adjust water temperature

Press the  button to adjust water temperature to the desired level. Repeating button allows you to adjust from Low, Medium to High levels.

LOW > Medium > High > OFF
↑

To adjust seat temperature

Press the  button to adjust seat temperature to the desired level. Repeating button allows you to adjust from Low, Medium to High levels.

LOW > Medium > High > OFF
↑


- Finish the Setting

Press the  button or not pressing any button for 5 seconds to complete the setting.

Power Saving - Timer Setting Function

(Timer setting to suit personal needs to re-activate power for heater after countdown hours.)

Please operate this function while Not Seated.

1. Press and hold the  button for over three seconds. This will activate the timer setting. (* Power light will flash)

Repeat the  button again, it will decrease or increase the time count down as below,

For example :  2 4 6 8 10 12 hours
 • flashing Power light • Timer light is on as per the set time

2. Timer is set when not pressing any button for 5 seconds.

For example :  2 4 6 8 10 12 hours

- Power & Timer lights will flash interchangeably to indicate the completion of timer set up.

NOTE:

Power saving is available for 2-12 hours.
A light on indicates to add 2 hours each for power saving / timer.

* At the end of countdown, heater will resume. Seat & water heat up to the pre-set temperature level.


* If you need to use the product during the power saving count down hours, simply sit on the bidet seat to re-activate seat switch. The power saving function is off once seated. The seat & water will heat up to the pre-set temperature level.

REMARKS : 1. While the product is in use, some water will flow out from two sides of nozzles.

Please rest assure to use as this is due to the structure to release excess water pressure.

2. When the water supply is lower than 1.3 kgf/cm^2 , the water pressure from nozzles could still be low even it is adjusted to the highest level. Please ensure the water supply is efficient with 1.3 kgf/cm^2 .

- In addition, in the case of the water supply pressure is efficient, but the cleaning function is still not working well. Possible reasons are : other faucets in the house are in use or the water tank of toilet bowl is flushing at the same time while you are using the bidet shower.

 Please read the following instruction before maintenance task starts.
Always unplug the power cord before cleaning!

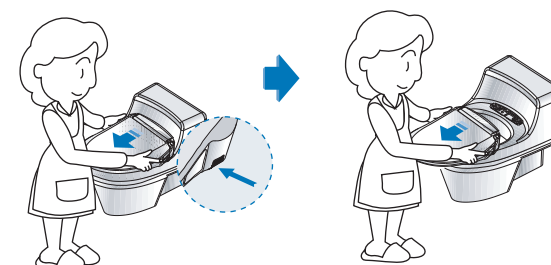
I. Bidet seat cleaning

Use a soft and damp cloth to wipe the seat gently and clean again with a dry soft cloth.

II. Clean the interspace between body housing and toilet

1. Remove the product

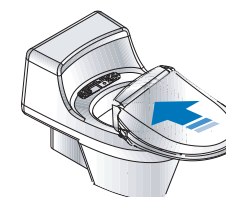
- I. Push the release button located on the back right side of seat and gently pull forward.
- II. Please take care do not damage or bend the bidet hose, power cord, during the removal.



2. Clean ceramic surface and back of body housing

3. Resume to attach the product

Slide the product onto the mounting plate. When you hear a "click" it indicates the seat has been properly attached.



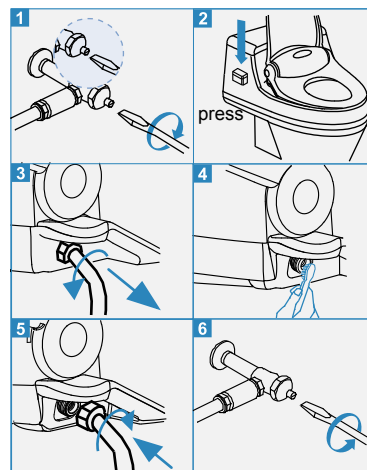
III. Nozzles cleaning

It is recommend that you clean retractable nozzles monthly or as necessary. To clean the nozzles, pull them out gently and use soft, damp brush or cloth to wipe down. DO NOT use soap or detergents to clean the nozzles.



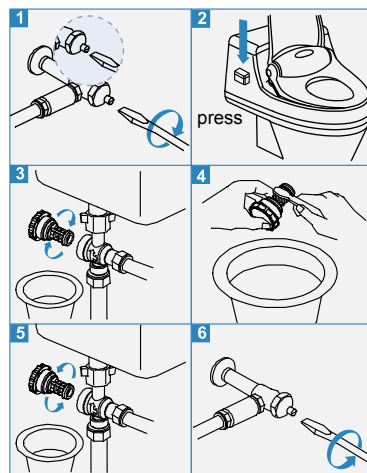
IV. Bidet-Hose Filter Cleaning

- 1) Turn water valve off completely.
- 2) Flush the toilet to empty the water tank. (Failure to do so could result in leaking or flooding!)
- 3) Disconnect the Bidet Hose from the seat.
- 4) Gently brush and clean the filter with water to remove build-up.
- 5) Reconnect the Bidet Hose to the T-Valve.
- 6) Turn the water valve back on.



V. T-Valve Filter Cleaning

- 1) Turn water valve off completely
Use the screwdriver to turn water valve off.
- 2) Flush the toilet to empty the water tank
Failure to do so could result in leaking or flooding!)
- 3) Unscrew the filter from the T-Valve
 - Place a container under the filter first, dismantle the filter softly.
 - Don't move the T-Valve, or it will cause water to leak.
- 4) Clean
Gently brush and clean the filter with water to remove build-up.
- 5) Reconnect the filter to the valve
- 6) Turn the water valve back on.



	Issue	Possible	Solution
1	Low spraying water	1. Clogged filter 2. Twisted hose	1. Clean water filter 2. Straighten the hose
2	Nozzles do not function properly	1. Nozzles are dirty 2. Clogged filter 3. Water pressure is too low	1. Clean the nozzles 2. Clean the filters 3. Adjust water pressure
3	Nozzles fail to retract	1. Nozzles are dirty	1. Clean the nozzles
4	Washing feature does not work or fails to spray	1. User not properly seated 2. User weights less than 10 kgs	1. Adjust your sitting position 2. Have a adult help by pressing down on the seat
5	Product shuts off during use	1. Washing time exceeded 5 minutes 2. Power failure	1. Repeat cleaning function 2. Check power and / or unplug the cord to reset
6	Seat not heated	1. Seat temperature set to off	1. Reset heated seat temperature
7	Water not heated	1. Water temperature set to off	1. Reset heated water temperature
8	Remote control failed	1. Remote control can't receive 2. Battery is low power 3. Location of remote control is not suitable	1. Something or somebody disturb the receiving from the remote control 2. Replace the battery 3. Change or move the location of the remote control
9	Dryer not working	1. Dryer only operates when activated	1. Sit on product to operate dryer
10	Other	1. Please contact the agent	1. Agent will provide service support

Customer Name:

Installation Company Name:

Model:

Installation Date:

Please make sure you fill in the installation date and installation company.

Authorized: B-O-LANE Comfortech Co., Ltd.

Manufactured in Taiwan:
B-O-Lane Comfortech Co., Ltd.
www.b-o-lane.com www.e-loo.com
sales@b-o-lane.com

Europe office:
New Line S.r.l.
www.newlineitalia.com
info@newlineitalia.com